

BOROUGH OF HAMBURG
SUSSEX COUNTY, NEW JERSEY
BASKETBALL & PICKLE BALL
COURT IMPROVEMENT PROJECT

ADDENDUM NO. 2

August 29, 2023

TO ALL CONCERNED:

The original Contract Documents Dated June 2023 for the above-referenced Contract are mended as noted in this Addendum. This Addendum shall become a part of the Contract Documents and is to be attached thereto.

Bidders are reminded that they must acknowledge receipt of all addenda on the designated page (B-4) in the Specifications of the bid documents.

Please note the bid receipt date has been updated to September 21, 2023 at 10:00 am.

Modifications regarding the Specifications:

1. Notice to Bidders, Page NB-1, Second Paragraph, 1st sentence:

Delete: "...will be received at the Borough Hall, 16 Walkkill Avenue, Hamburg, New Jersey 07419 on **July 27, 2023**, at 11:00 a.m ..."

Add: "...will be received at the Borough Hall, 16 Walkkill Avenue, Hamburg, New Jersey 07419 on **September 21, 2023**, at **10:00 a.m...**"

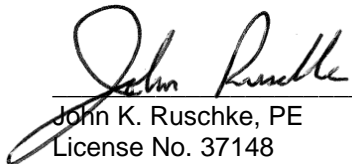
2. Schedule of Bid Items, Page B-2

Delete: Schedule of Bid Items, Page B-2.

Add: Revised Schedule of Bid Items, Page B-2A & B-2B.

Modifications regarding the Contract Drawings:

1. **Delete:** Original Site Plan, 1 page.
Add: New updated Site Plan page C-101 revised 8-9-2023.
2. **Add:** Plan drawing No. D-101, revised 8-9-2023 containing new fence detail.
3. **Add:** Plan drawing No. D-102, revised 8-9-2023 containing new fence detail.



John K. Ruschke, PE
License No. 37148

BID
to the
BOROUGH OF HAMBURG
SUSSEX COUNTY, NEW JERSEY
BASKETBALL & PICKLE BALL
COURT IMPROVEMENT PROJECT

SCHEDULE OF BID ITEMS

		<u>AMOUNT</u>
ITEM 1	FOR FURNISHING AND INSTALLING ATHLETIC COURT SURFACE FOR CONVERSION OF AN EXISTING TENNIS COURT TO ONE (1) BASKETBALL COURT INCLUDING CENTER HAMBURG EMBLEM, ALL POLES, AND NETS (60' X 120'), COMPLETE	
	THE LUMP SUM PRICE OF:	
	_____	\$ _____
	(WRITE UNIT PRICE in Words and Numbers)	
ITEM 2	FOR FURNISHING AND INSTALLING ATHLETIC COURT SURFACE FOR CONVERSION OF AN EXISTING TENNIS COURT TO TWO (2) PICKLEBALL COURTS INCLUDING ALL POSTS AND NETS (60' X 60'), COMPLETE	
	THE LUMP SUM PRICE OF:	
	_____	\$ _____
	(WRITE UNIT PRICE in Words and Numbers)	
ITEM 3	FOR FURNISHING AND INSTALLING 8' HIGH CHAIN-LINKED FENCING, COMPLETE	
	356 L.F. @ \$ _____ Per L.F.	\$ _____

	(WRITE UNIT PRICE in Words and Numbers)	
ITEM 4	FOR FURNISHING AND INSTALLING 6' HIGH CHAIN-LINKED FENCING, COMPLETE	
	236 L.F. @ \$ _____ Per L.F.	\$ _____

	(WRITE UNIT PRICE in Words and Numbers)	

ITEM 5 FOR FURNISHING AND INSTALLING 8' HIGH CHAIN-LINKED GATE, COMPLETE

1 Unit @ \$_____ Per Unit \$_____

(WRITE UNIT PRICE in Words and Numbers)

ITEM 6 FOR FURNISHING AND INSTALLING 6' HIGH CHAIN-LINKED GATE, COMPLETE

1 Unit @ \$_____ Per Unit \$_____

(WRITE UNIT PRICE in Words and Numbers)

TOTAL BASE BID (Items 1 through 6 inclusive) \$_____

(WRITE TOTAL BASE BID in Words and Numbers)



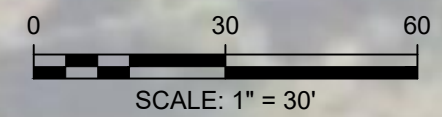
PROPOSED BASKETBALL COURT
(60 FEET BY 120 FEET)
CONTRACTOR TO INSTALL SURFACE, TWO POLES
WITH NETS, 8 FEET HIGH PERIMETER CHAIN-LINKED
FENCING, AND ONE GATE PER SPECIFICATIONS

PROPOSED PICKLEBALL COURTS (2 COURTS)
(60 FEET BY 60 FEET)
CONTRACTOR TO INSTALL SURFACE, TWO NETS,
FOUR POLES, 6 FEET HIGH PERIMETER
CHAIN-LINKED FENCING AND ONE GATE PER
SPECIFICATIONS

WALLKILL AVENUE

AMES BLVD.

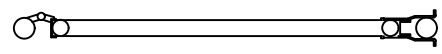
SHOP DRAWINGS TO BE PROVIDED
FOR ALL MATERIAL INCLUDING A
STRIPING LAYOUT PLAN



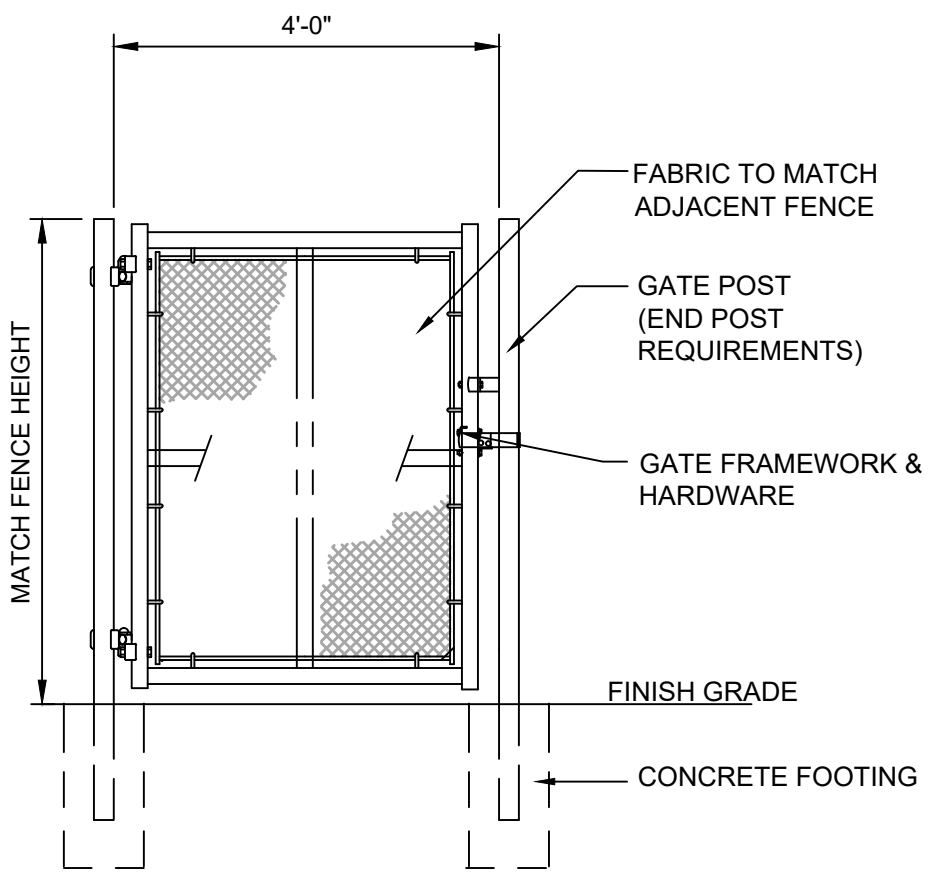
© Mott MacDonald

This document is issued for the party which commissioned it and for specific purposes connected with the captioned project only. It should not be relied upon by any other party or used for any other purpose. We accept no responsibility for the consequences of this document being relied upon by any other party, or being used for any other purpose, or containing any error or omission which is due to an error or omission in data supplied to us by other parties.

	412 Mt Kemble Avenue Suite G22 Morristown, New Jersey 07960 Certificate No. 24GA28016600 T +1 (800) 832 3272 F +1 (973) 376 1072 www.mottmacamericas.com	Client BOROUGH OF HAMBURG SUSSEX COUNTY NEW JERSEY	Rev	Date	Drawn	Description	Ch'k'd	App'd	Title BASKETBALL AND PICKLEBALL COURT IMPROVEMENTS SITE PLAN Drawing Number C-101	Drawn	RS	04/23	
											Checked	KN	04/23
											Approved	JKR	04/23
			Scale at ANSI B			1"=30'				Security	Status	Rev	
			1	8-9-23		Addendum No. 2				STD	PRE		

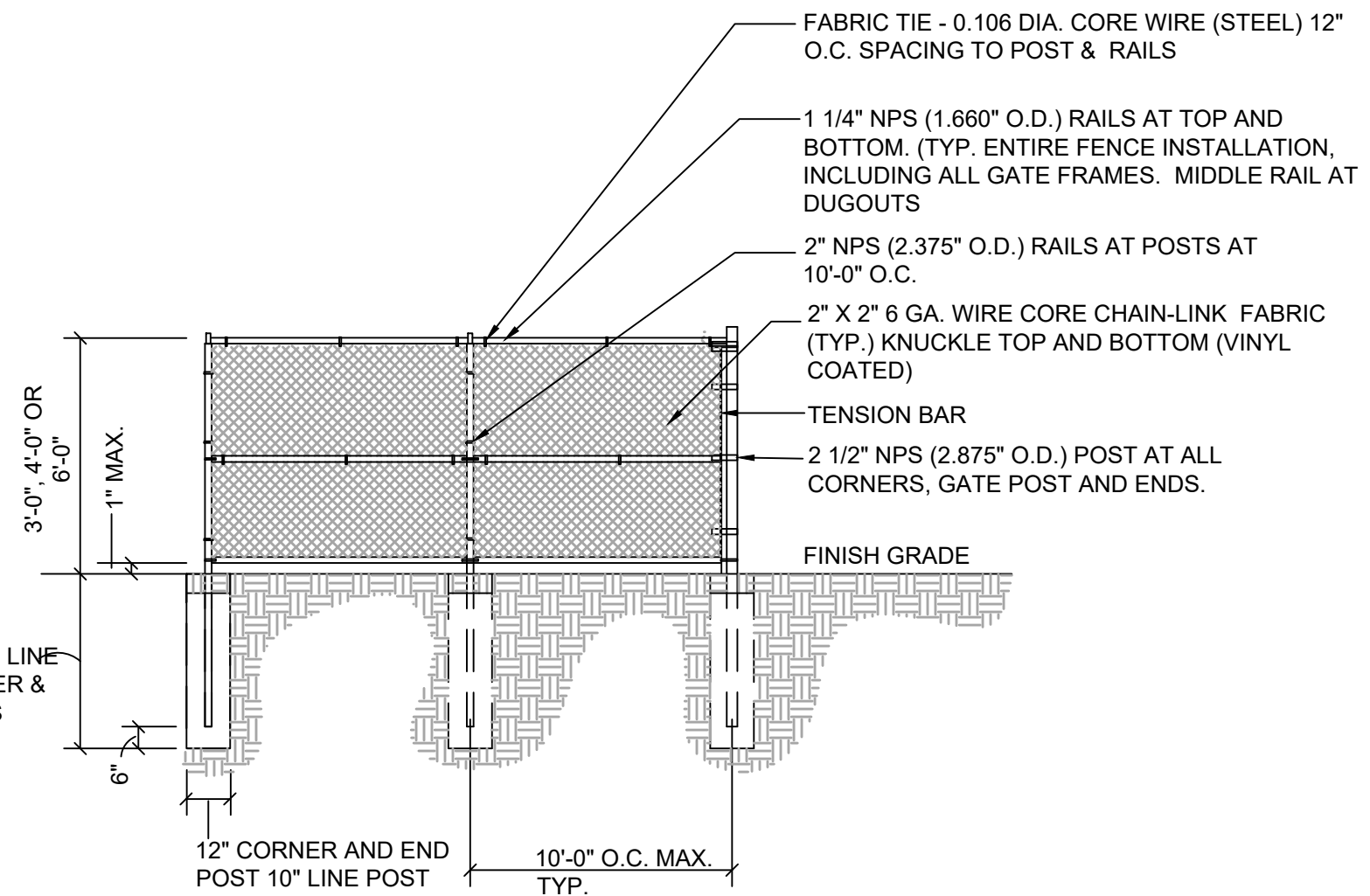


GATE PLAN



GATE ELEVATION

NOTE:
ALL FENCE FRAMEWORK TO BE POLYMER
COATED AS MANUFACTURED BY AMERISTAR
FENCE PRODUCTS, www.ameristarfence.com, OR
EQUAL



POSTS 6'-0" LINE
4'-0" CORNER &
END POSTS

12" CORNER AND END
POST 10" LINE POST

- FABRIC TIE - 0.106 DIA. CORE WIRE (STEEL) 12" O.C. SPACING TO POST & RAILS
- 1 1/4" NPS (1.660" O.D.) RAILS AT TOP AND BOTTOM. (TYP. ENTIRE FENCE INSTALLATION, INCLUDING ALL GATE FRAMES. MIDDLE RAIL AT DUGOUTS)
- 2" NPS (2.375" O.D.) RAILS AT POSTS AT 10'-0" O.C.
- 2" X 2" 6 GA. WIRE CORE CHAIN-LINK FABRIC (TYP.) KNUCKLE TOP AND BOTTOM (VINYL COATED)
- TENSION BAR
- 2 1/2" NPS (2.875" O.D.) POST AT ALL CORNERS, GATE POST AND ENDS.

FINISH GRADE

SCALE	4' WIDE GATE	SCALE	6' CHAIN LINK FENCE WITH PROTECTION CAP
	NOT TO SCALE		NOT TO SCALE

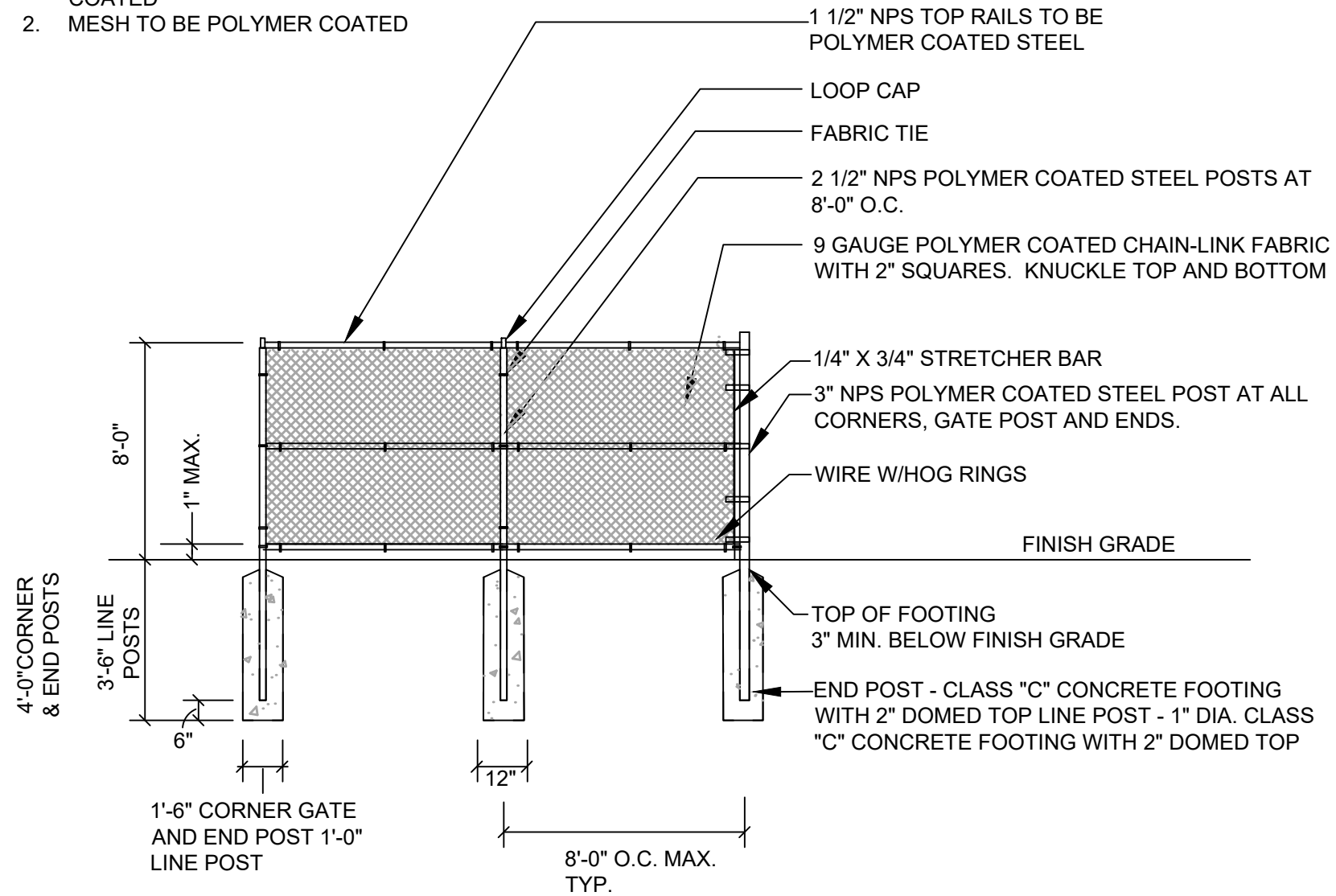
© Mott MacDonald

This document is issued for the party which commissioned it and for specific purposes connected with the captioned project only. It should not be relied upon by any other party or used for any other purpose. We accept no responsibility for the consequences of this document being relied upon by any other party, or being used for any other purpose, or containing any error or omission which is due to an error or omission in data supplied to us by other parties.

	412 Mt Kemble Avenue Suite G22 Morristown, New Jersey 07960 Certificate No. 24GA28016600 T +1 (800) 832 3272 F +1 (973) 376 1072 www.mottmacamericas.com	Client BOROUGH OF HAMBURG SUSSEX COUNTY NEW JERSEY	Rev	Date	Drawn	Description	Ch'k'd	App'd	Title BASKETBALL AND PICKLEBALL COURT IMPROVEMENTS DETAILS Drawing Number D-101	Drawn	RS	04/23		
											Checked	KN	04/23	
												Approved	JKR	04/23
			Scale at ANSI B									N.T.S		
			1	8-9-23		Addendum No. 2						Security	STD	Status

NOTE:

1. ALL POST AND RAILS ARE TO BE POLYMER COATED
2. MESH TO BE POLYMER COATED



8' HT CHAIN LINK FENCE (NOT IN CONTRACT)

SCALE NOT TO SCALE

© Mott MacDonald

This document is issued for the party which commissioned it and for specific purposes connected with the captioned project only. It should not be relied upon by any other party or used for any other purpose. We accept no responsibility for the consequences of this document being relied upon by any other party, or being used for any other purpose, or containing any error or omission which is due to an error or omission in data supplied to us by other parties.



412 Mt Kemble Avenue
Suite G22
Morristown, New Jersey 07960
Certificate No. 24GA28016600

T +1 (800) 832 3272
F +1 (973) 376 1072
www.mottmacamericas.com

Client
BOROUGH OF HAMBURG
SUSSEX COUNTY
NEW JERSEY

Rev	Date	Drawn	Description	Ch'k'd	App'd
1	8-9-23		Addendum No. 2		

Title	BASKETBALL AND PICKLEBALL COURT IMPROVEMENTS		
	DETAILS		
	D-102		

Drawn	RS	04/23
Checked	KN	04/23
Approved	JKR	04/23
Scale at ANSI B		
N.T.S		
Security	Status	Rev
STD	PRE	